
Truck Scale Management Program (MTS2.0) User Manual

DACELL CO.,LTD
37-9 Cheoksan 5gil ,Nami - Myeon , Seowon-Gu.,
Cheongju-city , Chung-Buk, Korea
TEL : +82-43-260-2242 FAX : +82-43-260-2245
Website: www.dacell.com Email: info@dacell.com

Program Name	Truck Scale Management (MTS)	Truck Scale Management (MTS200E)	Page No.	2
Version	Ver 2.00			

G U I 명			
---------	--	--	--

Screen Display	Explain Application
----------------	---------------------



Program Operating Condition

MTS2.0 program was made and operated under following software(OS) and Hardware.

Software

- . System file folder : C:/MTS200E

Hardware

- . CPU : Over or Same as "Pentium"
- . RAM : Over or Same as "512MB"
- . OS : Windows XP or Vista or WIN 7/8
- . At least "50 MB" additional Hard Disk available Space.
- . Display Resolution : Over or Same as "VGA (1280 * 800)"

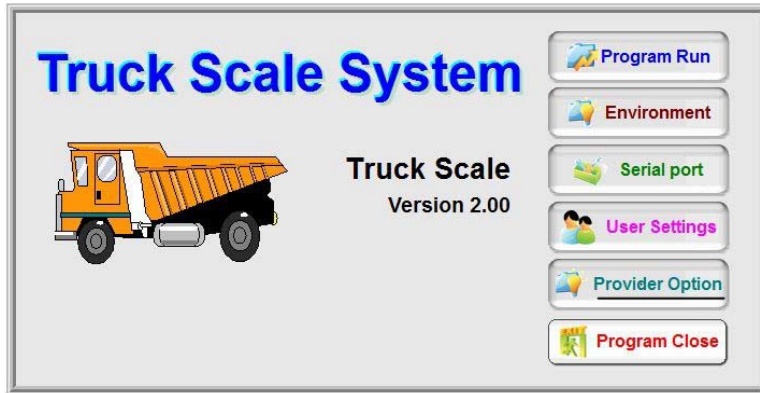
Program Installation Method

It just copy a main file and paste to under "C" folder and then make to short cut at window.
Then you just press the icon of MTS200E with double click.

Program Name	Truck Scale Management (MTS)	Truck Scale Management (MTS200E)	Page No.	3
Version	Ver 2.00			

G U I 명	Beginning Screen		frmStart
---------	------------------	--	----------

Screen Display	Explain Application
----------------	---------------------



2. Item Description

1) Program Run

Left screen will be disappear and start a Main program immediately.

2) Environment Setting

After input Password which set, if press confirmation key, it will be displayed a menu of User Environment Setting and can set them.

3) Serial port (Communication) Setting

After input Password which set, if press confirmation key, it will be displayed a screen of Communication Setting and can set them with related equipment.

4) User Setting

After input Password which set, if press confirmation key, it will be displayed a menu of User information Setting and can set them.

5) Provider Setting (Password : 6092, Fixed)

After input Password which set, if press confirmation key, it will be displayed a menu of Provider environment Setting and can set them.

The Provider Password is different with User Password and it is given Password for control to whole program and equipment setting.

3. Further Explanation

- The contents from Environment Setting to User Setting, it can be modify at menu of main program after open to main program too but if you modified at main program, the modified contents would be applied when re-start after program off. Herewith menu buttons are offered a menu to set-up usefully for beginning set values when first setting.

Also, the Provider Setting menu is not existed at main screen.

A provider use this menu when only set-up for early program and it is composed a items which user should not touch without permission.

At operating manual, we don't explain for the Provider Setting.

1. Preface

- When operating program at beginning time, an above screen will be displayed.

- If Program Run mode would be auto mode, this window will appear during roughly 2sec and disappear after the sec then will be displayed next Main Display Window.

If it would be an manual mode, you should press the Program Run button so that start to Main program.

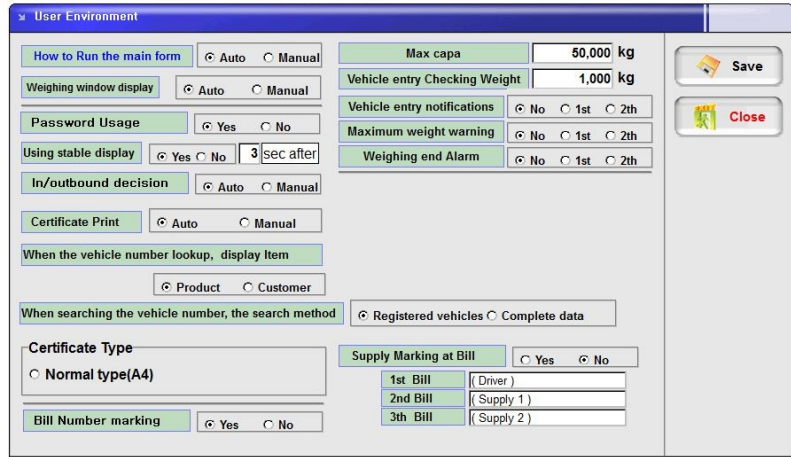
When Auto mode, if you want change a user environment and others, you should clear the auto mode by press the related button before start to Main program.

- If you press any button which related from Environment Setting to Provider Setting, the Run mode will change with manual mode from auto and the Main program should be operating when press the Program Run button.

Program Name	Truck Scale Management (MTS)	Truck Scale Management (MTS200E)	Page No.	4
Version	Ver 2.00			

G U I 명	User Environment Setting		frmSYSM070
---------	--------------------------	--	------------

Screen Display	Explain Application
----------------	---------------------



1. Outline

- This screen will be displayed for Provider Setting of main menu, after input a password of Provider Setting.
- At this screen, user can set-up to all-round contents for program manage.

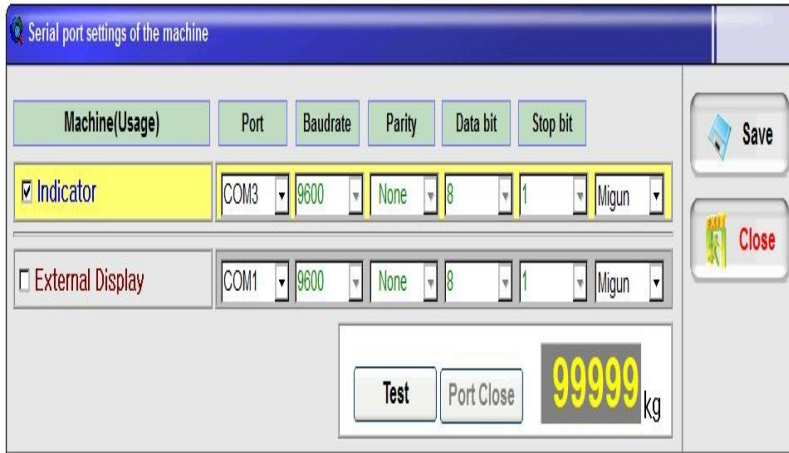
2. Item Description

- 1) How to run the Main Form : At beginning screen of 2 page, this select is about started way to the main screen whether Auto or Manual.
If it would be an manual mode, you should press the Program Run button so that start to Main program per each ON time for program.
 - 2) Weighing window display : If this item select, it will be start main program and at the same time it will be appear a weighing screen of Truck Scale System then start to communication with suitable equipment automatically.
 - 3) Password Usage : If you want use a password for each setting, you can select and input and also it can be modify the password in Provider Setting.
 - 4) Steady-display Use : Display a weight when steady as much as selected time.
 - 5) In/Out bound Decision : You can select to In/Outcome of Vehicle by Auto or Manual.
 - 6) Certificate (Weighing Bill) Print: It can print out via installed weighing bill style in program.
 - 7) When the vehicle number lookup, display item : Article to display with vehicle no. together at vehicle selecting window whether Product or Customer.
 - 8) When searching the vehicle number, the search method : When check a vehicle,
 - Registered Vehicle : Check a registered vehicle at data base
 - Complete data : At Weighing Finish List, check a vehicle at complete data.
 - 9) Bill(Certificate) type is fixed with A4 size, 3ea bills as normal type.
 - 10) Bill Number marking
 - 11) Max. capa. and Vehicle entry Checking Weight
 - 12) Vehicle entry notification, Max. Weight warning , Weighing end Alarm
 - 13) Supply Marking at Bill for 1st, 2nd and 3th bill.
- 8) Weight reduction/Decreasing rate : If use weight reduction/decreasing rate, it can select which one use of weight reduction/decreasing rate and can input the weight reduction/Decreasing rate.
- 9) Half adjust of Amount : Half adjust when calculate amount of product.
- 10) Application Digit : Digits when half adjust of amount. (It can select a number in the tens, hundreds and thousands)

Program Name	Truck Scale Management (MTS)	Truck Scale Management (MTS200E)	Page No.	5
Version	Ver 2.00			

G U I 명	Communication Setting		frmSYSM060
---------	-----------------------	--	------------

Screen Display



Explain Application

2. Item Description

- 1) If you check to Checking box in front equipment name of using equipment, it will be all activated and change with yellow color in related section.
- 2) Setting to port for connect with suitable equipment
- 3) With reference the related equipment, setting to Speed, Parity bit, Data bit and Stop bit.
- 4) Serial port(Communication) Setting : Please call to default value each manufacturer-company of indicator.
If you select manual setting, it can be set-up to a wanted communication value directly.
- 5) Test
If press "Test" bar, it can know that the communication is normal or not.
If the communication is normal, a weight will be displayed at window.

1. Outline

- This screen will be displayed when beginning start screen or selecting for Serial(Communication) port in Environment Setting of main menu.
- At this screen, user can set-up for communication with equipment.
- Except user's necessary, please don't touch this part.
If would be wrong setting, it will happen to problem for communication with equipment.

Program Name	Truck Scale Management (MTS)	Truck Scale Management (MTS200E)	Page No.	6
Version	Ver 2.00			

G U I 명	User Information Setting		frmSYSM020
---------	--------------------------	--	------------

Screen Display

Explain Application

2. Item Description

- 1) User Company Name : Please input the name simply. This name will be displayed right upper side in main screen.
- 2) User Company Name(L) : Please input formal name to the company.
- 3) The other parts are not necessary data for operating program.
If you need input to reference, you can input them.

1. Outline

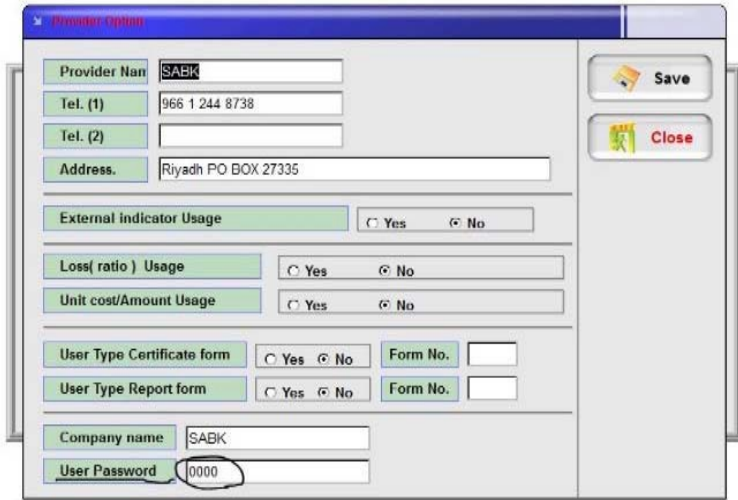
- This screen will be displayed when beginning start screen or selecting for User Information Setting in File of main menu.
- At this screen, user can set-up to all-round contents for User Information Setting.
- At this screen which set User Company Name, User Company Name(L), it will be printed out on the weighing bill when Report print out later.

Program Name	Truck Scale Management (MTS)	Truck Scale Management (MTS200E)	Page No.	7
Version	Ver 2.00			

G U I 명	User Password Setting		frmPass010
---------	-----------------------	--	------------

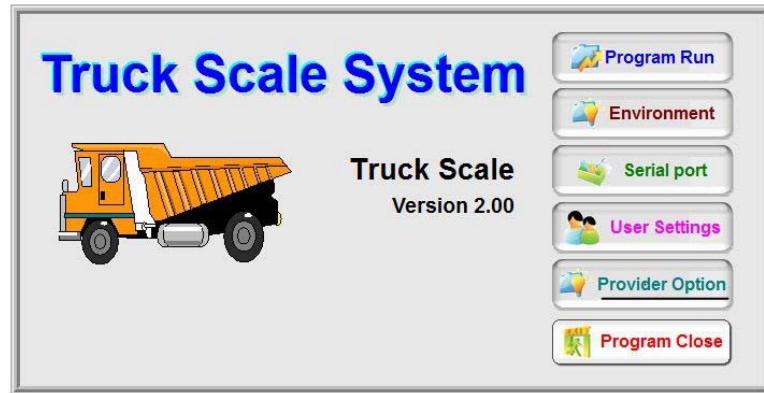
Screen Display

Explain Application



2. Item Description

- 1) Confirmation : After check to correct the Password or not, if the password is correct, it will be turn with next screen but if wrong, it will be displayed the message that is wrong.
- 2) If you change this password for every user setting, you should enter "Provider Setting" when will be displayed first main menu icons as like under picture. Herewith you can change to new password when will be displayed as like left side picture.



1. Outline

- This screen will be displayed to asking for user permission, before modify which related operating program as like User Environment Setting or Communication Setting, per every settings when you enter "Provider Setting" at first main menu icons as like right side picture.

Fixed P/W of "Provider Setting" : 6092

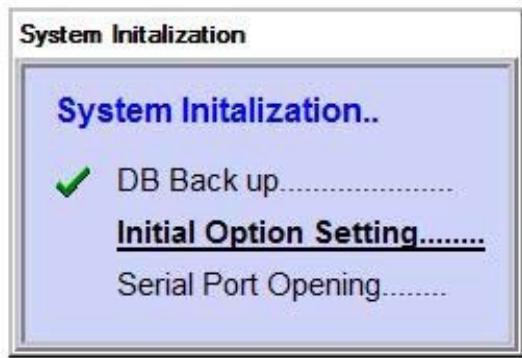
3. Further Explanation

- You must remember the password. If lost the password, you can't know the password forever, unless open the DB.

Program Name	Truck Scale Management (MTS)	Truck Scale Management (MTS200E)	Page No.	8
Version	Ver 2.00			

G U I 명	Main screen - 1		frmMain
---------	-----------------	--	---------

Screen Display	Explain Application
----------------	---------------------



1. Outline

- This screen will be displayed when beginning start of main screen.
- Through this screen process, user can set-up initial setting values for operating program.

2. Item Description

- 1) Optimization for DB and Back up
 - This program would be maintain a back up data of 5 days on open date basis to protect from DB braking or unexpected accident.
 - Program opening at the same time, it better optimized to use the DB and the data back up automatically.
- 2) Initial Setting Value Loading
 - It would be read to overall initial setting values for operating program.
- 3) Check to Communication Setting status
 - Check the port for communication with equipment.

3. Further Explanation

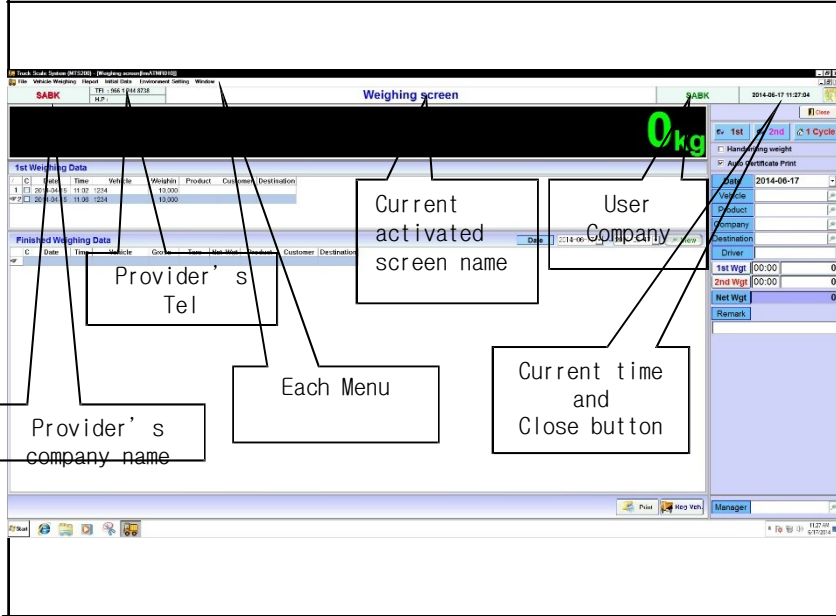
- Above three things are essential elements for operating program. So when opening, if would be happen even one of problem among above three things, this program will be stop or finished automatically with error message together.

Program Name	Truck Scale Management (MTS)	Truck Scale Management (MTS200E)	Page No.	9
Version	Ver 2.00			

G U I 명	Main screen - 2		frmMain
---------	-----------------	--	---------

Screen Display

Explain Application



1. Outline

- Above screen is main display and at upper side of this screen, there is each menu which can display for File, Vehicle Weighing, Report, Initial data and Environment Setting.
- Each items are explained on above picture.

2. Item Description (Menu Explanation)

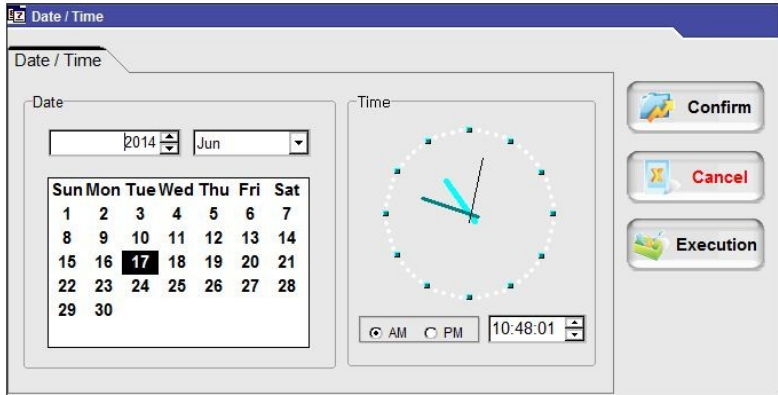
- 1) File
 - User Setting : It will be displayed User Setting screen.(Reference 4 Pages)
 - Date / Time Change : It can change a date/time of system.(Reference 8 Pages)
 - Data Back-up : Back-up to current DB as today date.(Reference 9 Pages)
 - Data Restoration : Data restore to current data with back-up.(Reference 10 Pages)
- 2) Vehicle Weighing
 - Vehicle Weighing Process : This is scale program for vehicle weighing.
At User Environment Setting, if select 'When program starting, weighing screen display', this screen would be activated together with start to main display at once.
 - Weighing details Inquiry : It can a inquiry or modify/add/delete to weighing details.
- 3) Report
 - Inquiry / Print out per list
: You can see the weighing data through screen or report/Excel after inquiry per desired conditions.
 - Inquiry / Print out per total
: You can see the weighing data through screen or report/Excel after total per desired conditions.
- 4) Initial Data : To compose initial Master.
 - Manager Registration
 - Vehicle Registration
 - Product Registration
 - Customer Registration
 - Destination Registration
- 5) Environment Setting
 - Communication Environment(Reference 3 Page), User Environment (Reference 2 Page)
 - Program Information : The information of program, Provider and User will display

Program Name	Truck Scale Management (MTS)	Truck Scale Management (MTS200E)	Page No.	10
Version	Ver 2.00			

G U I 명	Date / Time Change		frmSYSM010
---------	--------------------	--	------------

Screen Display

Explain Application



2. Item Description

- 1) This screen is almost similar to change screen of Date/Time at Window.
- 2) The desired date can modify at Date screen.
- 3) Within time screen, the current time can modify.
- 4) If would be modify, the apply button will be activated and press the button then will be applied the value.

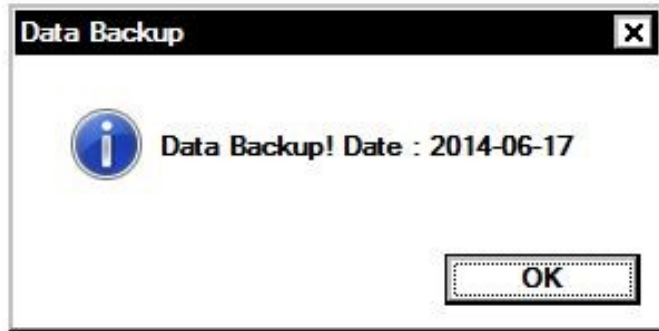
1. Outline

- Through above screen in "File", the system time can be modified.

Program Name	Truck Scale Management (MTS)	Truck Scale Management (MTS200E)	Page No.	11
Version	Ver 2.00			

G U I 명	Data Back-up		
---------	--------------	--	--

Screen Display	Explain Application
----------------	---------------------



2. Contents of Explanation

- When start program, a current DB will be back-up automatically and it always have a data of last 5 days.
- But, if user want to back-up for DB at current moment, it can progress through this button.
- If you were opened this program on today morning, a back-up DB of today date will become a standard to morning time on today.
But, if you back-up once again at this moment, the back-up DB of today date will be standard to current time.

1. Outline

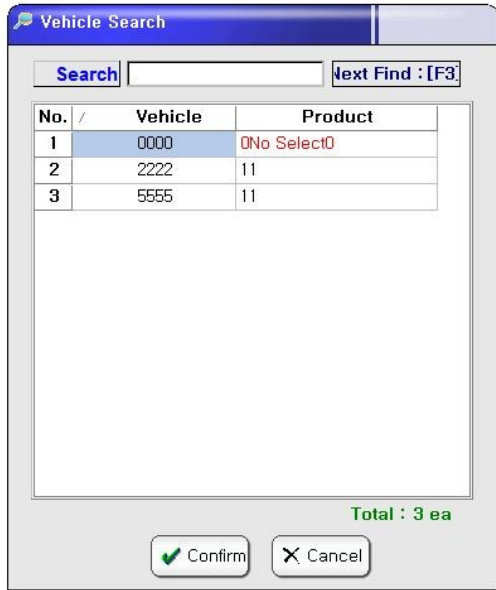
- This screen will be displayed after back-up if press Data Back-up menu in "File".

Program Name	Truck Scale Management (MTS)	Truck Scale Management (MTS200E)	Page No.	12
Version	Ver 2.00			

G U I 명	Inquiry screen(Vehicle / Product / Destination / Customer / Belonged Company...)		frmBASCO01
---------	--	--	------------

Screen Display

Explain Application



2. Item Description

- Through Search menu, you can find item with desired word.
- Grid Sort Function : It can sort with sequential or the opposite way per Code and Name.
- Double click to wanted item or it can select the item through click Confirmation button.
- The non-select(Blank) item will be used to clear which related menu of displayed item.
To clear related menu, there is no other way except in this Blank.

1. Outline

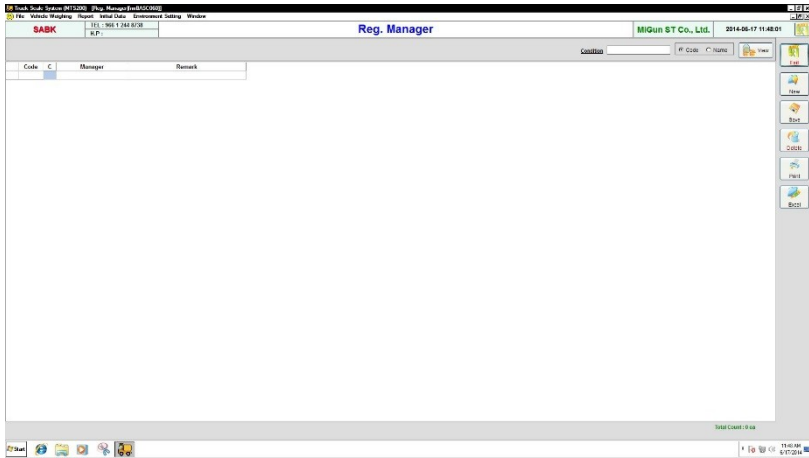
- This screen is vehicle inquiry as one of screen which displayed when clicked inquiry button at each screen in "Weighing details Inquiry".
- With under type, it can inquiry per each data.
(Vehicle / Product / Destination / Customer / Manager and etc.)

Program Name	Truck Scale Management (MTS)	Truck Scale Management (MTS200E)	Page No.	13
Version	Ver 2.00			

G U I 명	Manager Registration		frmBASCO60
---------	----------------------	--	------------

Screen Display

Explain Application



2. Item Description

- Inquiry Condition :
After select a Code or Manager name, if input a words to inquiry into text cell of Inquiry Condition, it will be check according the condition.
- New : Use to add a Manager.
- Save : Modify is come on Grid of related screen.
If press Save button, it will be saved the modified contents.
- Delete : After click within Check Box which a head of Grid, if press Delete button, it will be deleted the related item.
- Print/Excel : If press these button, the data of current screen will be print out with Report or Excel type.
- Search : If press right side button of your Mouse within related Grid, some of menu will be appear. And after select "search" menu, if input a words to find then press Enter key, it will find the Grid cell with related words from top to bottom and from left to right side. For next seeking continuously, press 'F3' key. (There is no division of Capita and small letter.)

1. Outline

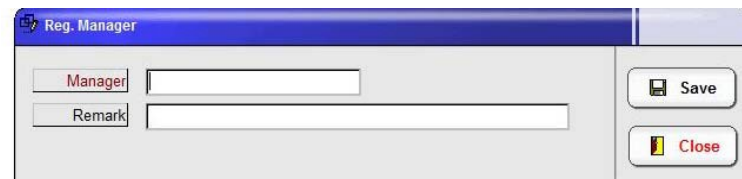
- This is screen to register who operating manager for MTS system in "Initial Data".

3. Modify and Delete Method

- Modify is come on Grid of related screen. If double click to modify for item, it will be enable status to modify. After finish the modify, if press Save button, it will be saved in DB. When double click, if not enter into item, the item cannot modify.
- After click within Check Box which a head of Grid, press Delete button.

4. Add to Manager

- If press New button, it will be displayed follows screen. Item move is Tab key in keyboard and Save is Enter key or Save button.

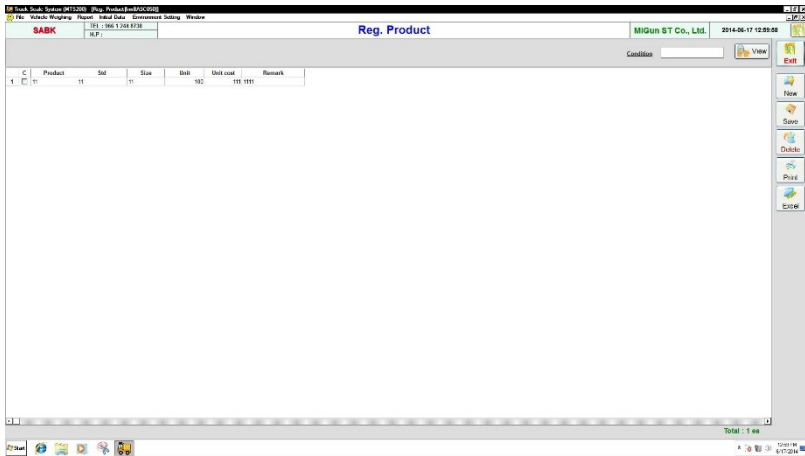


Program Name	Truck Scale Management (MTS)	Truck Scale Management (MTS200E)	Page No.	14
Version	Ver 2.00			

G U I 명	Product Registration		frmBASCO50
---------	----------------------	--	------------

Screen Display

Explain Application



3. Item Description

- Inquiry Condition : After select a Code or Product name, if input a words to inquiry into text cell of Inquiry Condition, it will be check according the condition.
- New : Use to add a Manager.
- Save : Modify is come on Grid of related screen.
If press Save button, it will be saved the modified contents.
- Delete : After click within Check Box which a head of Grid, if press Delete button, it will be deleted the related item.
- Print/Excel : If press these button, the data of current screen will be print out with Report or Excel type.
- Search : If press right side button of your Mouse within related Grid, some of menu will be appear. And after select Search menu, if input a words to find then press Enter key, it will find the Grid cell with related words from top to bottom and from left to right side. For next seeking continuously, press 'F3' key. (There is no division of Capita and small letter.)

1. Outline

- This is screen to register that product to carry a vehicle in "Initial Data".

2. Grid section Explanation

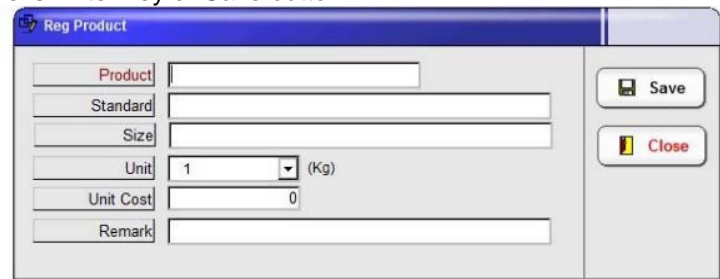
- Code
Internal code of system which beginning with 'B' and would be given by System.
- User Code
This is random code by user determined and use when input a item at scale.
- Applied Unit
Means that applied unit of amount so if the applied unit is 10Kg, the means that the unit price would be applied per 10Kg.
- Unit Price : Unit price per applied unit.

4. Modify and Delete Method

- Modify is come on Grid of related screen. If double click to modify for item, it will be enable status to modify. After finish the modify, if press Save button, it will be saved in DB. When double click, if not enter into item, the item cannot modify.
- After click within Check Box which a head of Grid, press Delete button.

5. Add to Item

- If press New button, it will be displayed follows screen. Item move is Tab key in keyboard and Save is Enter key or Save button.

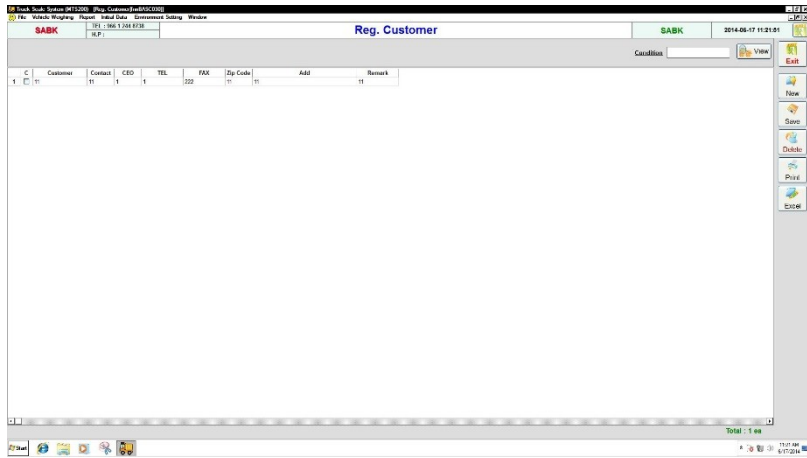


Program Name	Truck Scale Management (MTS)	Truck Scale Management (MTS200E)	Page No.	15
Version	Ver 2.00			

G U I 명	Customer Registration		frmBASC030
---------	-----------------------	--	------------

Screen Display

Explain Application



3. Item Description

- Inquiry Condition :

After select a Code or Customer name, if input a words to inquiry into text cell of Inquiry Condition, it will be check according the condition.

- New : Use to add a Manager.

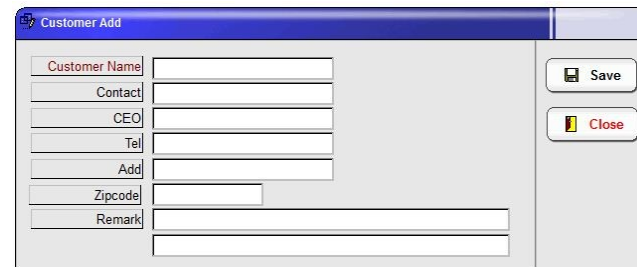
- Save : Modify is come on Grid of related screen.
If press Save button, it will be saved the modified contents.
- Delete : After click within Check Box which a head of Grid, if press Delete button, it will be deleted the related item.
- Print/Excel : If press these button, the data of current screen will be print out with Report or Excel type.
- Search : If press right side button of your Mouse within related Grid, some of menu will be appear. And after select Search menu, if input a words to find then press Enter key, it will find the Grid cell with related words from top to bottom and from left to right side. For next seeking continuously, press 'F3' key. (There is no division of Capita and small letter.)

4. Modify and Delete Method

- Modify is come on Grid of related screen. If double click to modify for item, it will be enable status to modify. After finish the modify, if press Save button, it will be saved in DB. When double click, if not enter into item, the item cannot modify.
- After click within Check Box which a head of Grid, press Delete button.

5. Add to Customer

- If press New button, it will be displayed follows screen. Item move is Tab key in keyboard and Save is Enter key or Save button.



1. Outline

- This is screen to register a customer in "Initial Data".

2. Grid section Explanation

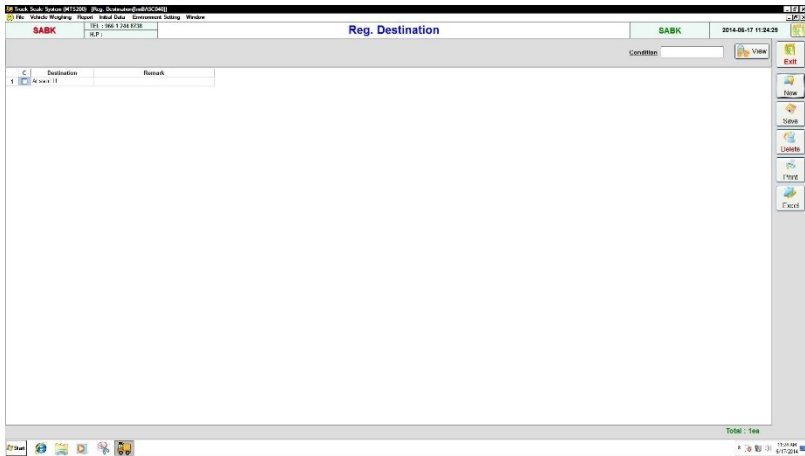
- Code :
Internal code of system which beginning with 'C' and would be given by System.
- User Code
This is random code by user determined and use when input a customer at scale.

Program Name	Truck Scale Management (MTS)	Truck Scale Management (MTS200E)	Page No.	16
Version	Ver 2.00			

G U I 명	Destination Registration		frmBASCO40
---------	--------------------------	--	------------

Screen Display

Explain Application



3. Item Description

- Inquiry Condition :

After select a Code or Destination name, if input a words to inquiry into text cell of Inquiry Condition, it will be check according the condition.

- New : Use to add a Manager.

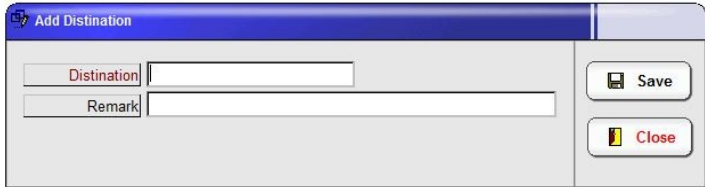
- Save : Modify is come on Grid of related screen.
If press Save button, it will be saved the modified contents.
- Delete : After click within Check Box which a head of Grid, if press Delete button, it will be deleted the related item.
- Print/Excel : If press these button, the data of current screen will be print out with Report or Excel type.
- Search : If press right side button of your Mouse within related Grid, some of menu will be appear. And after select Search menu, if input a words to find then press Enter key, it will find the Grid cell with related words from top to bottom and from left to right side. For next seeking continuously, press 'F3' key. (There is no division of Capita and small letter.)

4. Modify and Delete Method

- Modify is come on Grid of related screen. If double click to modify for item, it will be enable status to modify. After finish the modify, if press Save button, it will be saved in DB. When double click, if not enter into item, the item cannot modify.
- After click within Check Box which a head of Grid, press Delete button.

5. Add to Destination

- If press New button, it will be displayed follows screen. Item move is Tab key in keyboard and Save is Enter key or Save button.



1. Outline

- This is screen to register an destination of vehicle in "Initial Data".

2. Grid section Explanation

- Code :
Internal code of system which beginning with 'A' and would be given by System.
- User Code
This is random code by user determined and use when input an destination at scale.

Program Name	Truck Scale Management (MTS)	Truck Scale Management (MTS200E)	Page No.	17
Version	Ver 2.00			

G U I 명	Vehicle Registration		frmBASCO50
---------	----------------------	--	------------

Screen Display

Explain Application



3. Item Description

- Inquiry Condition :

After select a Code or Vehicle number, if input a words to inquiry into text cell of Inquiry Condition, it will be check according the condition.

- New : Use to add a Manager.

- Save : Modify is come on Grid of related screen.

If press Save button, it will be saved the modified contents.

- Delete : After click within Check Box which a head of Grid, if press Delete button, it will be deleted the related item.

- Print/Excel : If press these button, the data of current screen will be print out with Report or Excel type.

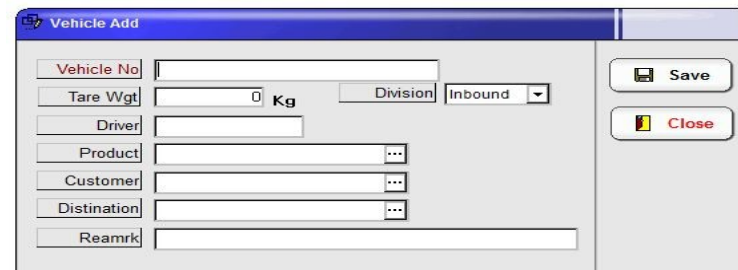
- Search : If press right side button of your Mouse within related Grid, some of menu will be appear. And after select Search menu, if input a words to find then press Enter key, it will find the Grid cell with related words from top to bottom and from left to right side. For next seeking continuously, press 'F3' key. (There is no division of Capita and Small letter.)

4. Modify and Delete Method

- Modify is come on Grid of related screen. If double click to modify for item, it will be enable status to modify. After finish the modify, if press Save button, it will be saved in DB. When double click, if not enter into item, the item cannot mo

5. Add to Vehicle

- If press New button, it will be displayed follows screen. Item move is Tab key in keyboard and Save is Enter key or Save button.



1. Outline

- This is screen to register a vehicle in "Initial Data".

2. Grid section Explanation

- The vehicle number means a formal vehicle number.
The vehicle number(No) means 4 digits of vehicle number.
These items cannot modify after input but deletion is possible.

- Driver : Vehicle Driver

- Product Name : Product to carry with a vehicle

- Belonged Company : Belonged company of the vehicle

- Customer : Customer of vehicle

- Destination : Destination of vehicle

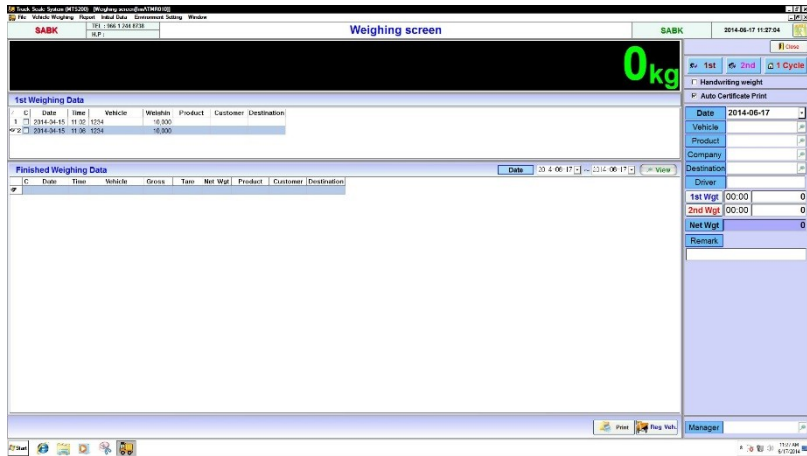
- Through button, it can select a item on Inquiry Check screen of each item. (Reference 11 Page)

Program Name	Truck Scale Management (MTS)	Truck Scale Management (MTS200E)	Page No.	18
Version	Ver 2.00			

G U I 명	Weighing Screen – 1		frmATMR010
---------	---------------------	--	------------

Screen Display

Explain Application



1. Outline

- This is screen to weighing a vehicle. And this screen is very important at this MTS program.

- It will be change a screen organization of this program according to connection method with device.

Above screen is full duplex weighing type (all check for In and Out of vehicle).

2. Operating Method – Manual Mode

(1) When click manual mode, it can be input manually. Of course it should be permit to change with manual mode.

(2) If changed manual mode, it will be activated 1st, 2nd and 1 Cycle button.

- If select 1st weighing, it will be apply after sorted into 1st weighing data which input data.
- For 2nd weighing, it should press the 2nd button after select the 1st weighing data in 1st weighing section.

And Then, after the 1st weighing data and input ted 2nd weighing data will be connect, it will be apply to Finish weighing data.

- 1 Cycle is to make one of finished weighing data which input all of 1st and 2nd data in order.

(3) After input data, if press a apply button, it will be apply.

And after applied, it will be back the status of 1st, 2nd and 1 Cycle selecting. But if you want cancel, you just press a cancel button in processing.

3. Operating Method 4 – Treatment according condition

- If appear weighing screen, there is formed a special function menu at menu bar. Among the menu, there is button to barrier open and can use that as necessary.

- The system is operating with step as 1st weighing -> 2nd weighing -> Finished weighing data apply. But it can be apply a wrong data sometimes at 1st weighing section so you just click the right button of mouse and can cancel the related data if this case. Finished weighing data have a same way to cancel too.

- 1st weighing data is visible whole data. That is, after 1st weighing, if not 2nd weighing process, it will be displayed all data unconditionally.

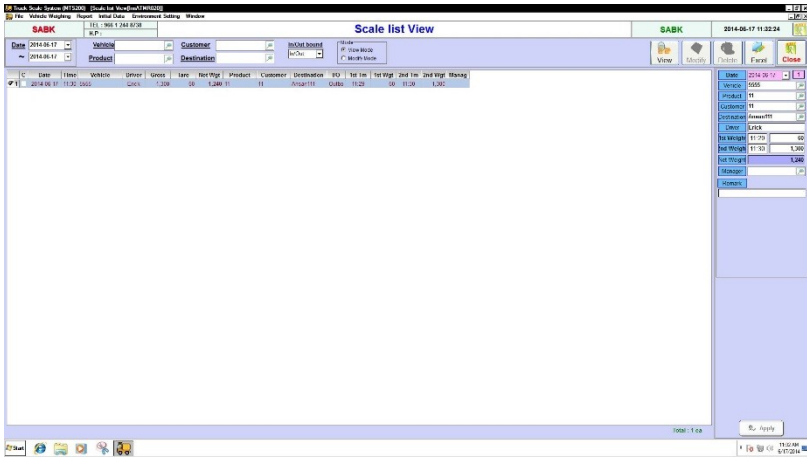
- Finished Weighing Data can select a inquiry section. Basically it would be selected a day of the day.

Program Name	Truck Scale Management (MTS)	Truck Scale Management (MTS200E)	Page No.	19
Version	Ver 2.00			

G U I 명	Weighing details Inquiry (Inquiry Mode)		f r mATMR020
---------	---	--	--------------

Screen Display

Explain Application



4. Grid section Explanation of right side in screen
- Weighing Date : It is weighing date.
 - No : Number of related weighing date
 - Total Weight : A little heavy weight or weight of not empty vehicle between 1st & 2nd weighing.
 - Empty Vehicle Weight: A little light weight or empty vehicle weight between 1st & 2nd weighing.
 - * That is, calculate the total weight, empty vehicle weight and real weight after compared with 1st & 2nd weight and also divide In & Out.
 - 1st, 2nd weighing Time & Weight : Effective weighing value of 1st and 2nd.
 - Product, Unit Price, Amount :
It is carried product and converted amount according to unit price & weight.
 - Belonged Company, Customer, Destination and etc...

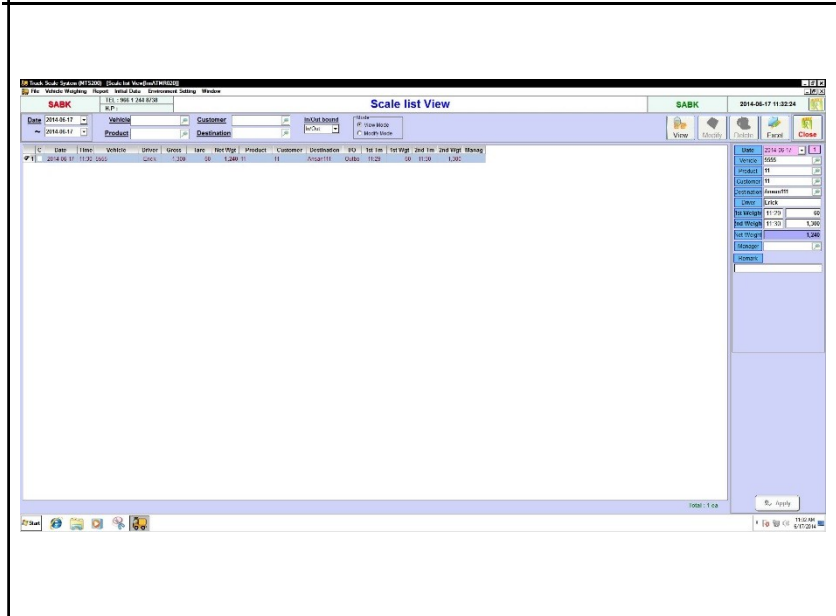
5. Upper side Item Description in screen
- When modify mode, it is item to modify and when inquiry, only make it easier to see the inquiry content.
 - Picture Description : Above picture takes when uploading.
(Of course now is not vehicle picture.)
If double click to related picture, you can see more big screen and can adjust the size.

1. Outline
 - This is screen for inquiry a weighing data after finished weighing process.
2. Inquiry Item Description
 - Weighing Date : Date is date term to inquiry.
 - It can add to Vehicle No/Customer/Product/Belonged Company in inquiry condition also can inquiry according In and Out.
3. Mode : There is Inquiry/Modify mode and now is inquiry mode. When change with modify mode, it can possible Add/Modify/Delete.
At this moment it can inquiry only.

Program Name	Truck Scale Management (MTS)	Truck Scale Management (MTS200E)	Page No.	20
Version	Ver 2.00			

G U I 명	Weighing details Inquiry (Modify Mode)	frmATMR020
---------	--	------------

Screen Display	Explain Application
----------------	---------------------



4. Grid section Explanation of right side in screen
 - Please refer Weighing Data Inquiry (Inquiry Mode)

5. Upper side Item Description in screen
 - When modify mode, it is item to modify and when inquiry, only make it easier to see the inquiry content.
 - Picture Description : Above picture takes when uploading.
 (Of course now is not vehicle picture.)
 If double click to related picture, you can see more big screen and can adjust the size.

6. Modify Method
 - Through right items, it can be modify to Vehicle, Belonged Company, Customer, Charger, Driver and 1st 차/2nd 차 weighing data also unit price and amount too.
 But Weighing Date and order No cannot modify.
 - If finished modify working, just press a Apply button in bottom side and then it will be apply the modified data in Grid section.
 - If press Save button in upper side, it will be reflected in DB.

7. Add Method
 - If press Add button in right bottom side, it would be add status. At this time if change a selecting line of Grid, it will clear to add status and will return modify status.
 - Within Add status, it can input a date, vehicle number and etc.
 - If press Apply button, it will be add in left side of Grid.
 - If press Save button in upper side, it will be reflected in DB.

1. Outline
 - This is screen to modify/Add/Delete a weighing data after weighing process.

2. Inquiry Item Description
 - Weighing Date : Date is date term to inquiry.
 - It can add to Vehicle No/Customer/Product/Belonged Company in inquiry condition also can inquiry according In and Out.

3. Mode : There is Inquiry/Modify mode and now is inquiry mode. When change with modify mode, it can possible Add/Modify/Delete.
 At this moment it can inquiry only.

8. Deleted Method
 - There is check button with square in very front left side of Grid so if click, it will be change to checked.
 In upper side of screen, if press a Delete button, it will be delete all checked data and cannot restore.

9. Excel : It is print out for a data of current screen through Excel program.

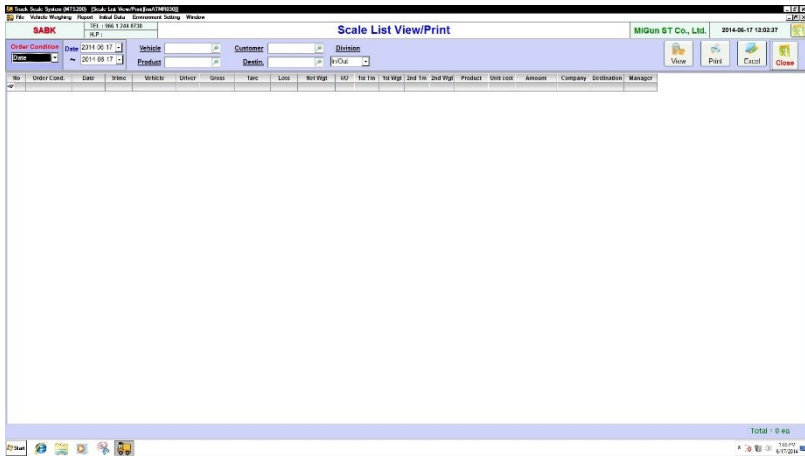
10. If press right side button of your Mouse in Grid, pop-up screen will be appear.
 - Seek : It will find a Grid cell which located the words to find.
 - Delete : It is same with Delete button in upper side screen.
 - Weighing Bill Issue : At User Environment Setting, if selected to print out for weighing bill in PC, it will be print out about the data of line which currently located .

Program Name	Truck Scale Management (MTS)	Truck Scale Management (MTS200E)	Page No.	21
Version	Ver 2.00			

G U I 명	Scale List View / Print		frmATMR030
---------	-------------------------	--	------------

Screen Display

Explain Application



3. Grid section Explanation

- Weighing Date section
 - : An weighing date part which front left side is changed according to arrange condition. That is, a item which would be arrange standards is located in most front side
- Weighing Date : It is weighing date.
 - No : Number of related weighing date
 - Total Weight : A little heavy weight or weight of not empty vehicle between 1st & 2nd weighing.
 - Empty Vehicle Weight: A little light weight or empty vehicle weight between 1st & 2nd weighing.
 - * That is, calculate the total weight, empty vehicle weight and real weight after compared with 1st & 2nd weight and also divide In & Out.
 - 1st, 2nd weighing Time & Weight : Effective weighing value of 1st and 2nd.
 - Product, Unit Price, Amount :
 - It is carried product and converted amount according to unit price & weight.
 - Belonged Company, Customer, Destination and etc...

4. Sub-total : Do Sub-total per arrange standards. There is included a total vehicle quantity, total weight, empty vehicle weight, real weight and total amount in Sub-total.

5. Grand-total : Do calculation a whole total. There is included a total vehicle quantity, total weight, empty vehicle weight, real weight and total amount in Grand-total.

6. Print out : It will be displayed look ahead screen type to a print out information as report type. And if press print button at related screen, it will be print out.

7. Excel : It is print out for a data of current screen through Excel program. But the Sub-total and Grand-total data will be drop out.
It will print out a pure data only by Excel, the user can use after adjust according to necessary .

1. Outline

- This screen is to inquiry one by one of weighing data in "Report".
- All report will be print out with Report/Excel type after inquiry.

2. Inquiry Item Description

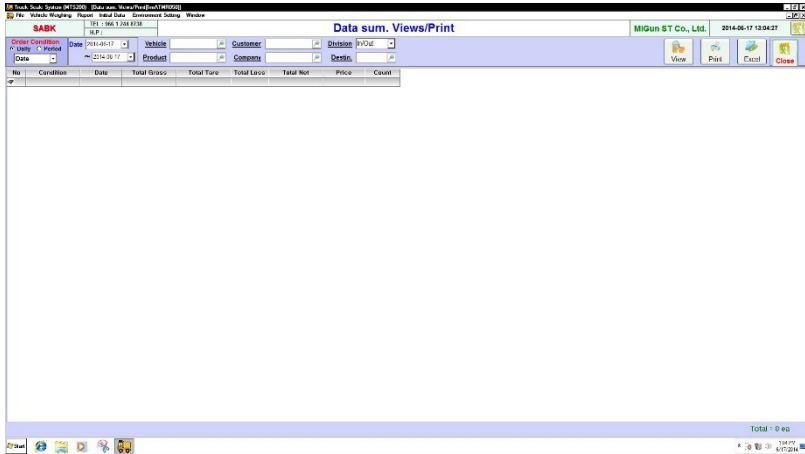
- Arrange Condition : It can inquiry per Order(time sequence), Vehicle, Belonged Company, Customer, Destination and Product after line up.
 - It can add to Vehicle No/Customer/Product/Belonged Company in inquiry condition also can inquiry according In and Out.
 - If press inquiry button, it will be inquiry according to condition. And at this moment, it does takes more time because each divided data should collect.
 - But, it will more fast operating regarding to arrange condition modify because use to existing data which collected.

Program Name	Truck Scale Management (MTS)	Truck Scale Management (MTS200E)	Page No.	22
Version	Ver 2.00			

G U I 명	Data Sum. Views / Print		f r mATMR040
---------	-------------------------	--	--------------

Screen Display

Explain Application



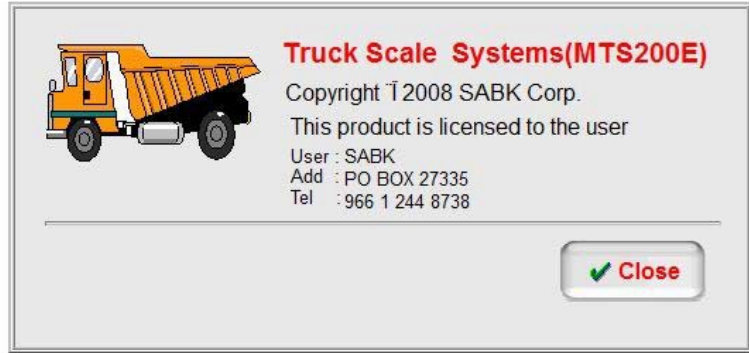
3. Grid section Explanation
 - Weighing Date section
 - : An weighing date part which front left side is changed according to arrange condition. That is, a item which would be arrange standards is located in most front side
 - Total Weight : Total weight which aggregated by the condition.
 - Empty Vehicle Weight : Empty Vehicle Weight which aggregated by the condition.
 - Amount : Amount which aggregated by the condition.
 - Number of Case : Case of vehicle which aggregated by the condition.
4. Grand-total : Whole total value.
5. Print out : It will be displayed look ahead screen type to a print out information as report type. And if press print button at related screen, it will be print out.
6. Excel : It is print out for a data of current screen through Excel program. But the Sub-total and Grand-total data will be drop out. It will print out a pure data only by Excel, the user can use after adjust according to necessary .

1. Outline
 - This screen is to inquiry per total of weighing data in "Report".
 - All report will be print out with Report/Excel type after inquiry.
2. Inquiry Item Description
 - Arrange Condition : It can inquiry per Order(time sequence), Vehicle, Belonged Company, Customer, Destination and Product after line up.
 - It can add to Vehicle No/Customer/Product/Belonged Company in inquiry condition also can inquiry according In and Out.
 - If press inquiry button, it will be inquiry according to condition. And at this moment, it does takes a more time because each divided data should collect.
 - But, it will more fast operating regarding to arrange condition modify because use to existing data which collected.

Program Name	Truck Scale Management (MTS)	Truck Scale Management (MTS200E)	Page No.	23
Version	Ver 2.00			

G U I 명	Program Information		frmSYSM100
---------	---------------------	--	------------

Screen Display	Explain Application
----------------	---------------------



2. Contents Description
 - It will be displayed a version, provider and user information about this program.

1. Outline
 - Above screen is appear when select to Program Information in Environment Setting.