

Web Tension Indicator

Total Indicator (3~4ch)



DSC40
(Digital Conditioner)



DN340

>Model DN300

Show totals separately with 2ch indicator.
Left and right values and totals are displayed separately
Analog and contact outputs for each channel and sum individually.

Calibration method by actual load and calibration with rated output of sensor.

- Watch dog
- Display part and analogue zero by auto zero (DAC)
- Analog out(DAC)
- Relay output : Hi, Low, NG, OK,
- Suitable for use with model RTB15

■Option

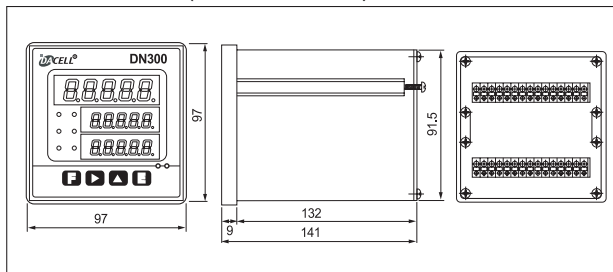
- OP-02 : RS232C serial interface (Standard installed)
- OP-03 : RS485 Multi drop interface

>SPECIFICATIONS

Specifications	Accuracy
Signal	1 ~ 3mV/V
Analog OUT	CH1 : 0 ~ 10V CH2 : 0 ~ 10V CH3 : 0 ~ 10V (A + B, IA - BI) (4 ~ 20mA option)
Excitation	5V
Available Sensors	Strain gauge type sensor (bridge 120, 350, 700)
Max. Indication	-19999 ~ +99999
A/D Converter	24bit 1000 times/sec
D/A Converter	16bit
Temp.	ZERO 0.5μV/°C
	SPAN 50ppm/°C
Indicator	7 segment LED 14mm / 10mm
Status LED	Red LED 6 EA
Key switch	4 EA
Communication	RS232C (A + B)
Comparison Output	A + B, IA - BI
Contact Capacity	AC 250V 5A
Temperature	-10°C ~ 60, 80% RH or less (no condensation)
Weight	About 600g
Power supply	AC 90 ~ 240V, 50/60Hz
Outer Diameter	97 × 97 × 141 mm (W × H × D)
Panel Cutting Size	92.5 × 92.5 mm

>DIMENSIONS (DN300, DN340)

unit:mm



>Model DN330, DN340

Digital indicator that displays the individual outputs and sum of the outputs of the four load cells. Suitable for high weight hopper, tank scale. Each load cell can be individually calibrated via the DSC40 and indicators.

- Watch dog
- Display part and analogue zero by auto zero(DAC)
- Relay output : Hi, Low, NG, OK,
- Analog out(DAC)
- DN330 : 3CH indicator DN340 : 4 CH indicator

■Option

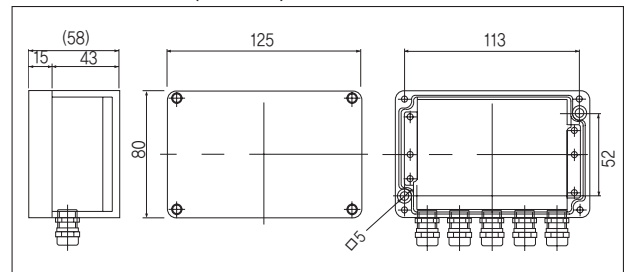
- OP-01 : BCD paralle out
- OP-02 : RS232C serial interface (Standard installed)
- OP-03 : RS485 Multi drop interface

>SPECIFICATIONS

Specifications	Model	
	DN-340	DSC40
Signal	-	1 ~ 3mV/V
Analog OUT	DC 0~10V (4 ~ 20mA option)	-
Excitation	-	DC 5V
Pressure Sensor count	-	4 Channel
Available Sensors	-	Stainless gauge sensor (bridge 120, 350, 700)
Display range	Individual display : -1999 ~ +9999	-
	Sum display : -19999 ~ +99999	-
A/D Converter	-	24 bit
D/A Converter	16 bit	-
Temp.	ZERO	0.5μV/°C
	SPAN	50ppm/°C
Measurement display	Individual : 7 segment LED 8mm	-
	Sum : 7 segment LED 14mm	-
Status LED	Red LED 6 ea	-
Key switch	4 ea	-
Comparison output	Upper limit (HI), lower limit (LO), normal (OK) Output (4 Relay)	-
Contact capacity	AC 250V 5A	-
Temperature	-10°C ~ 60°C, 80% RH or less	-10°C ~ 60°C, 80% RH or less
Weight	About 600 g	About 350 g
Power supply	AC 90 ~ 240V 50/60Hz	DC 8 ~ 12V, 2W
Cable grand	-	ø8mm cable grand 5ea
Option	RS232C or RS485	-
Outer diameter	97(W) × 97(D) × 141(H)mm	125(W) × 80(D) × 58(H)mm
Panel cutting size	92.5 × 92.5mm	-

>DIMENSIONS (DSC40)

unit:mm



★Specifications are subject to change without notice.