



User's Manual

DACELL Data Viewer Software Manual

USER: Customers of DACELL CO., LTD.



Table of Contents

1. General
2. Test Method
3. When Any Problem Occurs in the Program



1. General

This manual provides a detailed description of the test method to operate the DACELL Data Viewer, the software supplied by the DACELL Co., Ltd.

2. Test Method

Each sequence of test methods and operations are as follows.

- ① Program start and serial number input
- ② Port Setting
- ③ Data Search
- ④ Data Save
- ⑤ Memory Data Loading



① Program start and serial number input

A screenshot of a software window with a white background and a thin black border. At the top left, the text "Please input the serial codes." is displayed in a bold, black, sans-serif font. Below this text is a long, empty rectangular input field. To the right of the input field is a rectangular button with a 3D effect, containing the word "CHECK" in a bold, black, sans-serif font.

1) At the first boot after installation, the screen for inputting the serial number is displayed as shown in the above figure.

2) Enter the serial number provided by DACELL Co., Ltd. and then press the 'CHECK' button.

※ The above window will be displayed only at the first program boot. After entering the serial number correctly, the above screen will not be displayed any longer.

※ If the correct serial number is not entered, the program will exit automatically. When running the program again, the serial number entry window will be displayed.

② Port Setting

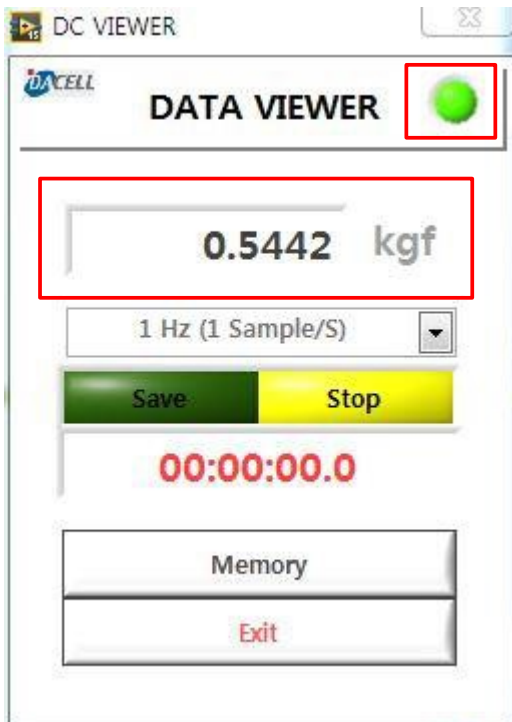


- 1) After the serial number has been entered correctly, the Port Setting window will be displayed as shown in the above figure.
- 2) Select the port of the model connected from the “PORT” (If you need to update a port, press “SEARCH PORT” button).
- 3) After completing port setting, press the “APPLY” button to disable the Port Setting window.

※ The address of the model to be used as the PC program for data logging shall be set to “01” (Number 1).

※ The port setting window will be always enabled during the execution of a program (During the execution of a program, you can't enable it again to change the port, etc.).

③ Data Search



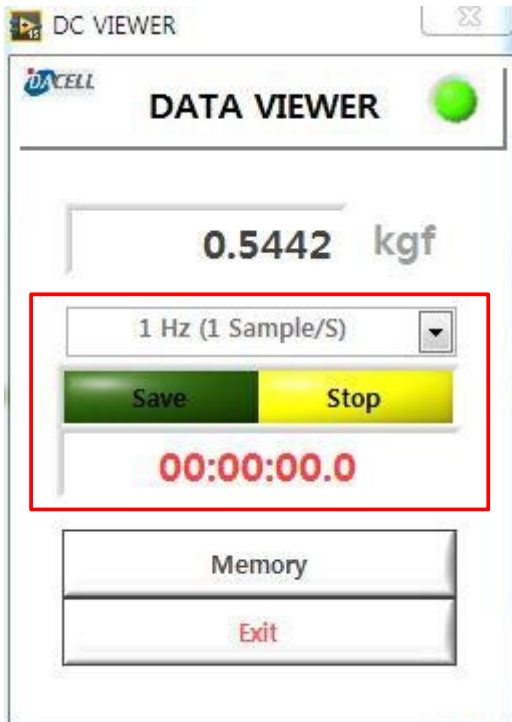
1) The lamp in the upper right of the main window displays the communication status of the system. If the communication link is disconnected due to the removal of cable or power failure, the lamp will not light up (to restore the communication status, you only need to eliminate the cause of failure; cable reconnection and power problem solving. Without restarting the program, the communication lamp lights up again).

2) The real time measurement value of the system will be displayed together with the measurement unit at the bottom of the main window Title.

※ If the measurement unit is changed in the system, the changes will be reflected in the main window.



④ Data Save



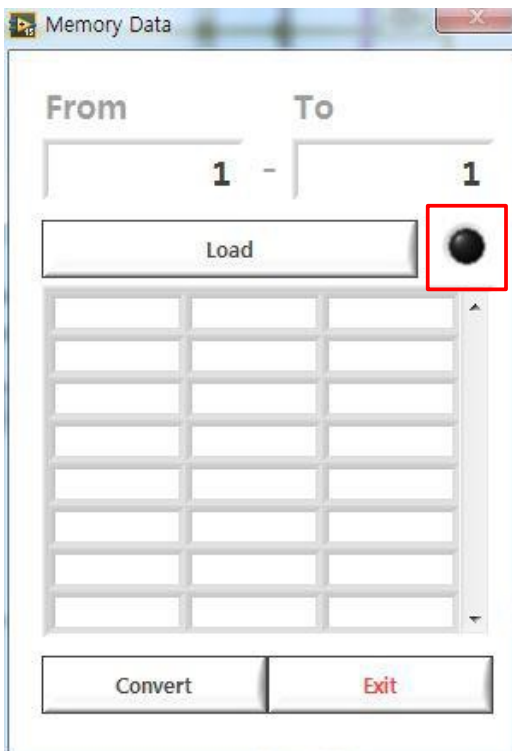
- 1) Set the data save interval at “Save” on the center of the main window (Select one among 0.1, 1, 2, 5, 10 Hz).
- 2) Press the “SAVE” button to save the data (the file will be created automatically to save the data in the directory of C:\DC Data Viewer\Data. Its file name is the time of data saving start).
- 3) The data save time will be displayed under the “SAVE” and “STOP” buttons.

※ The folder where the data are saved will be created automatically.

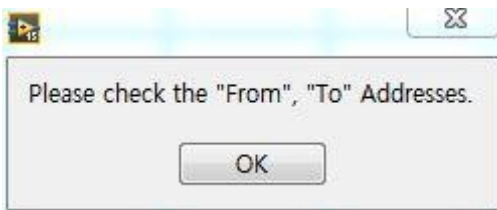
⑤ Memory Data Loading



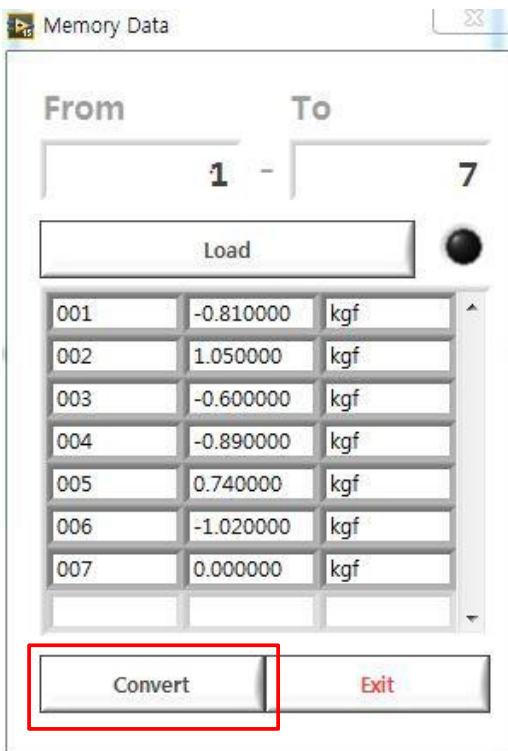
1) Press the “Memory” button at the bottom of the main window to enable the memory data loading window.



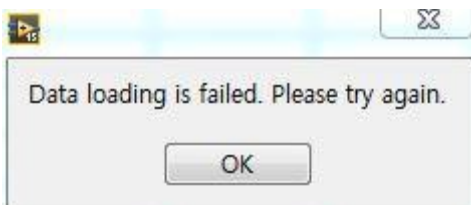
2) Enter the data address you want to load at “From” (1-500) and “To” (1-500). (If the number of the “From” column is greater than the “To”, the following error message window will appear when the “Load” button is pressed.)



3) If the data address to be loaded is entered correctly, press the “Load” button to load the saved data into the system (the lamp beside the “Load” button will flash as many as the number of loading data).

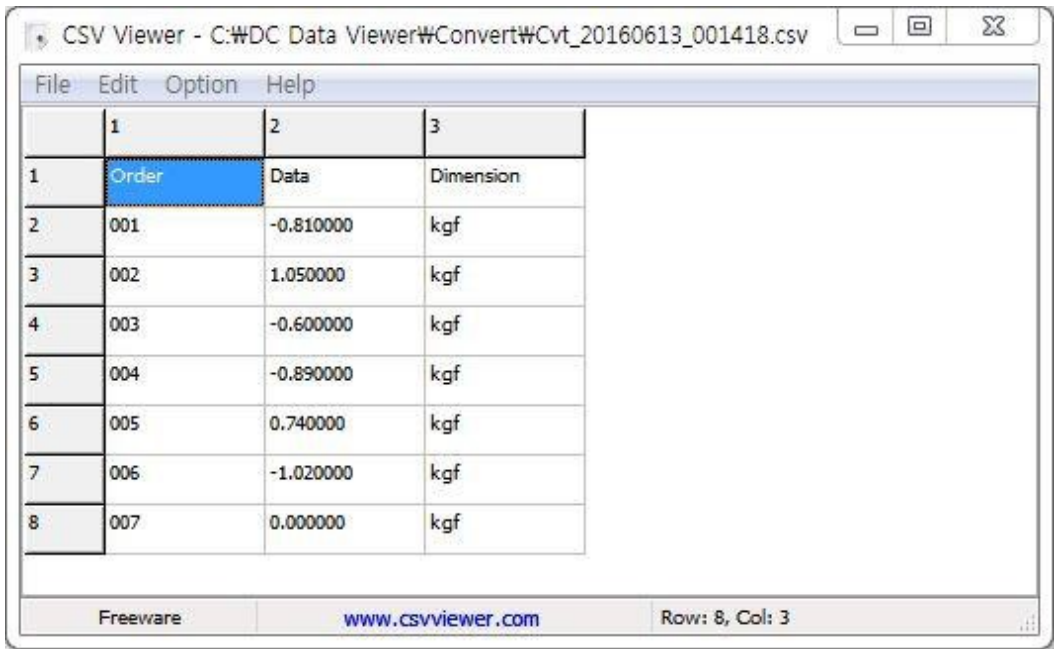


4) If loading is impossible due to communication interruption, etc.(if the loading time delay exceeding the amount of loading data * 0.1 sec.), the following message is displayed automatically and loading fails).



Data loading has failed. (please change in box above)

5) Press the “Convert” button in the lower left of Memory Data Loading window to save the loading data into CSV file. The file will be created in the directory of C:\DC Data Viewer\Convert. Its file name is the time the button is pressed.



CSV Viewer - C:\DC Data Viewer\Convert\Cvt_20160613_001418.csv

	1	2	3
1	Order	Data	Dimension
2	001	-0.810000	kgf
3	002	1.050000	kgf
4	003	-0.600000	kgf
5	004	-0.890000	kgf
6	005	0.740000	kgf
7	006	-1.020000	kgf
8	007	0.000000	kgf

Freeware www.csvviewer.com Row: 8, Col: 3

6) After completion of data loading, press the “Exit “button in the lower right of the window to disable the Memory Data Loading window.

※ If the same number at the “From” and “To” columns is entered, only one data set of the entered address will be loaded.



4. When any problem occurs in the program

This paragraph provides information on each solution if any errors occur in the program.

- ① When the system connection LED does not illuminate in the upper right of the main window.
 - Check the system for normal power conditions.
 - Check the cable connection between the system and the measurement PC.
 - Check the communication setting of system (Check if the system Address is set to "01").

- ② When the program does not operate normally (button malfunction or slow operation)
 - - Restart the program.
 - Reboot the PC.

- ③ When the program does not stop (Even though the "PROGRAM STOP" button is pressed, the program fails to stop).
 - If the program fails to stop after pressing the "PROGRAM STOP" button and waiting more than 7 seconds, a forced shutdown shall occur.
 - Window Taskbar > Task ManagerStart > Process Tab > LabVIEW.exe (select) >Process Exit

- ④ If the problem still persists in spite of the above solutions, contact DACELL Co., Ltd.
 - 043.260.2242
 - info@dacell.com