

Vol .1

MODEL : DN-AM130 \_\_\_\_\_  
DYNAMIC STRAIN AMPLIFIER

# USER'S Manual

## DACELL CO.,LTD.

Address : 681-1 Cheoksan -Ri ,Nami - Myeon , Cheongwon - Gun ,  
Chung-Buk, Rep. Of Korea

TEL : 043-260-2242

FAX : 043-260-2245

<http://www.dacell.com>

E-Mail : [info@dacell.com](mailto:info@dacell.com)

## 1. Prefix

This Amplifier is Dynamic Strain Measure meter of DC Voltage type.

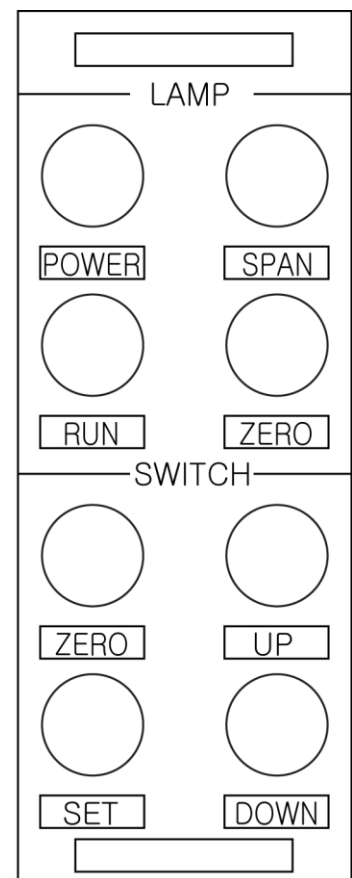
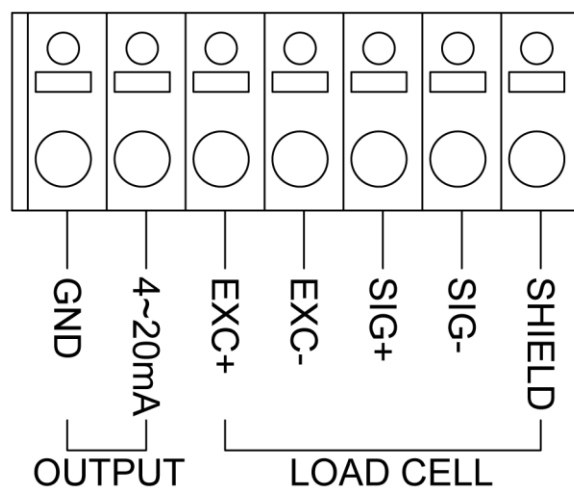
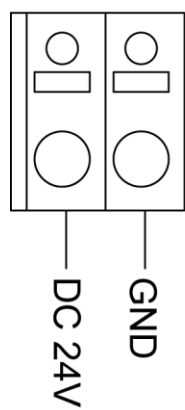
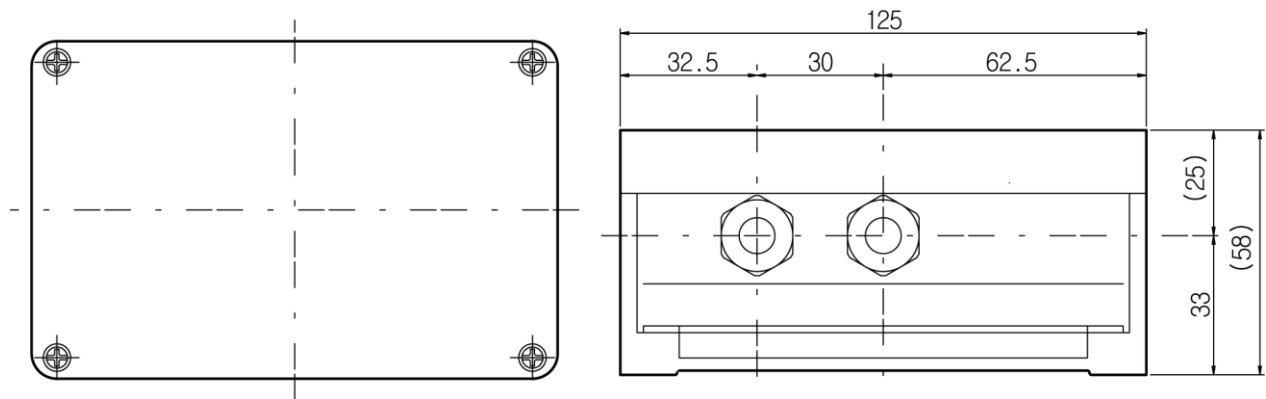
Waterproof type.

- One touch auto zero (Analog out zero)
- Application sensor: Load cell
- Real weight calibration

## 2. Specification

- ① Measurement marks  
: 1CH / EA
- ② Working Gauge  
: 350Ω, 750Ω
- ③ Bridge Voltage:  
DC 5V
- ④ Output  
: 4~20mA (0 ~ 10V : Option)
- ⑤ D/A Converter  
: 12 bit
- ⑥ Response frequency characteristic  
: 10Hz
- ⑦ Working temperature  
: -10 ~ +60°C
- ⑧ Power  
: DC 24V

### 3. Dimensions and the inside Composition



### 4. LAMP explanation

POWER LAMP : Power MONITER LED

RUN LAMP : Working Monitor LED

SPAN LAMP : SPAN INPUT LED when set to real weight Calibration .

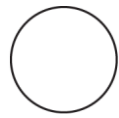
ZERO LAMP : ZERO INPUT LED when set to Zero Calibration .

## 5. SWITCH explanation

- ZERO KEY : If press 3 seconds, set to 4mA automatically.  
SET KEY : Calibration KEY  
UP KEY : At Calibration, output rise (At one touch, 5  $\mu$  A rise)  
DOWN KEY : At Calibration, output fall (At one touch, 5  $\mu$  A fall)  
(If press UP, DOWN key long, change of output grows)

## 6. CALIBRATION

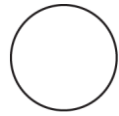
To calibrate load cell and AM130, the standard weight need more than 30% of full capacity.



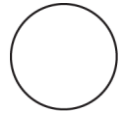
If press 3 seconds

RUN LED off

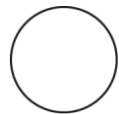
ZERO LED on



When it is no load to Load cell, please set to 4mA by UP key and DOWN key.

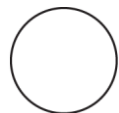


ZERO LED off



When give load more than 30% of Load cell capacity, SPAN LAMP becomes ON.

Please set to needed mA or 20mA by UP key and DOWN key.



Calibration END

